

OUR HEALTH, OUR CANCER JOURNEY

focusing on building capacity and partnerships with our Shoalhaven Aboriginal Community and Service Providers

BACKGROUND

Aboriginal and Torres Strait Islander people have poorer rates of cancer survival than non-Aboriginal people. The literature shows that Aboriginal people tend to be diagnosed with cancer at more advanced stages, suffer from cancers with poorer prognoses and are less likely to undertake treatment.

PROJECT AIM

The aim of this project was to strengthen the capacity of local service and community structures to support members of the Shoalhaven Aboriginal community with cancer. This project was a partnership between Waminda and ISLHD Cancer Services

METHOD

PLAN	We established a Reference Group to guide the implementation (ISLHD Cancer Services, Waminda, Shoalhaven AMS, Grand Pacific Health and ISLHD Aboriginal Chronic Care Unit, Cancer Council)
DO	We consulted with our partners, and together, we developed key culturally appropriate cancer related resources that were localised to, and for, the Shoalhaven Aboriginal Community
STUDY	We engaged and collaborated with our ACCHS partners and Community until we got it right!
ACT	We launched our localised video and resources to the Shoalhaven Aboriginal Community

RESULTS

All key objectives were achieved and very well received by the Shoalhaven Aboriginal Community, which was reflective of the consultative process.

Resources have been developed and published with strategies in place to sustain production and distribution, as well as support the on-going networks and relationships between ACCHS and ISLHD Cancer Services.



IMPACT

Cancer Service Partnership Outcome: Gaining a greater understanding of working with the Aboriginal community has enhanced relationships.

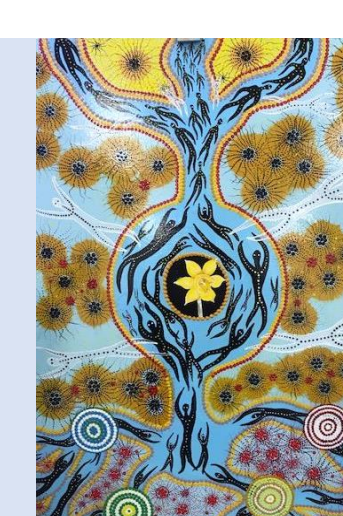
Patient Outcome: Empowered Aboriginal patients in their cancer journey by developing resources that are localised and specific for the Shoalhaven Aboriginal community.

Systems Outcome: More reliable and more informative data was achieved by extracting and cross-referencing from various data sources.



PROJECT TEAM

Waminda: Trish Deaves & Krissy Falzon
ISLHD: Anne Sheldon, Amy Windisch, Amy Hains, Nicola Ryan



COLLABORATIVE PARTNERS

Grand Pacific Health, South Coast Medical Service Aboriginal Corporation, ISLHD Aboriginal Chronic Care Unit, Cancer Council, ISLHD Palliative Care Service